

PROJECT: Peace Corps Volunteer - Multiple Projects

LOCATION: Antigua and Dominica, Leeward Islands, Eastern Caribbean

DATE: 1982- 1984

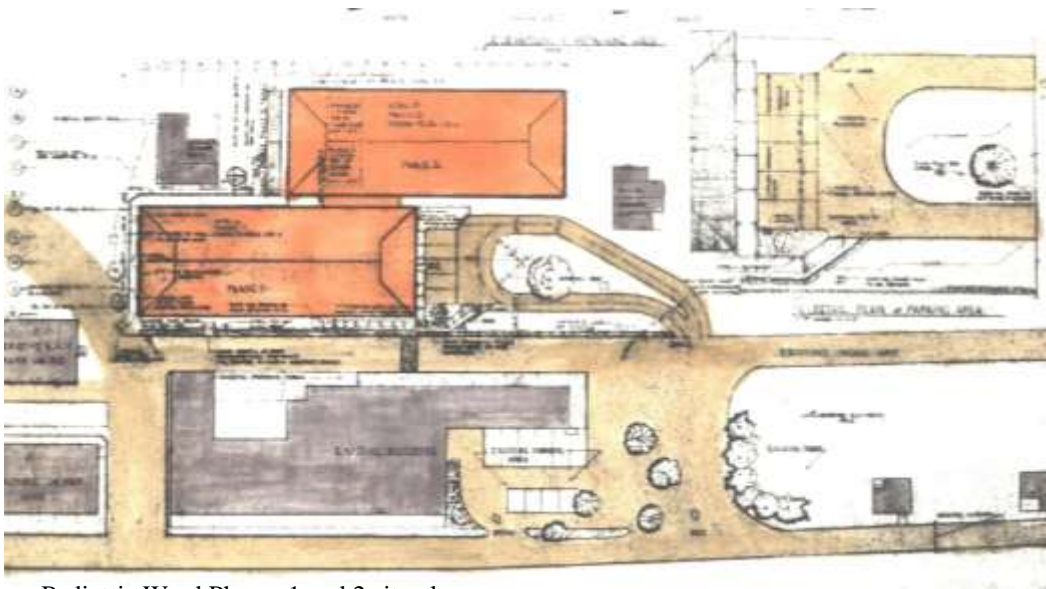
ROLE: Peace Corps Volunteer-Architect, Antigua and Barbuda Ministry of Public Works

DESCRIPTION:

After a competitive application process stressing applicant skills, adaptability and cross—cultural sensitivity, I began Peace Corps training on June 1, 1982 at Sligoville, Jamaica. I completed the six week training program and was formally enrolled in Peace Corps on July 15, 1982, I worked for the Ministry of Public Works and Communications. I served as an Architect assigned to the Drawing Office. My primary responsibilities included providing architectural designs for government projects and supervising the production of working drawings by the drawing office. Projects ranged from 1500 sq. ft. mental hospital ward to 20,000 sq. ft. Holberton Hospital Pediatric Ward addition. I provided recommendations on the feasibility of proposed Government Building Projects; acted as liaison with Government officials; trained the fifteen person drawing office staff; procured drafting materials and supplies for the drafting office; developed an appropriate technical library. I obtained and managed a \$1500 grant for purchase of technical books. I also contacted building centers, universities and private corporations requesting literature and donations.



Pediatric Ward-Phase 1 under construction.



Pediatric Ward Phases 1 and 2 site plan



Pediatric Ward - Phase 1 nearing completion of construction.

PROJECT: Peace Corps Volunteer - Multiple Projects



Model of Pediatric Ward - View towards northeast. Phase 1 at left.



Pediatric ward-Phase 1 wing under construction - view down main corridor.

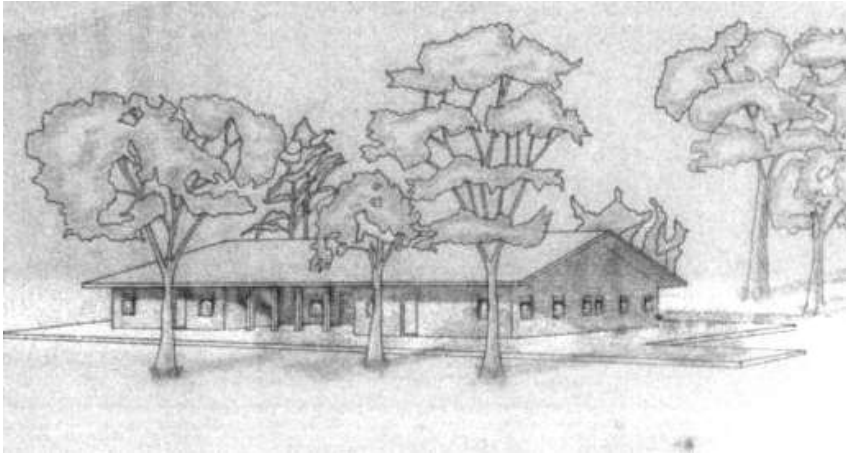


Pediatric Ward-Phase 1 floor plan.

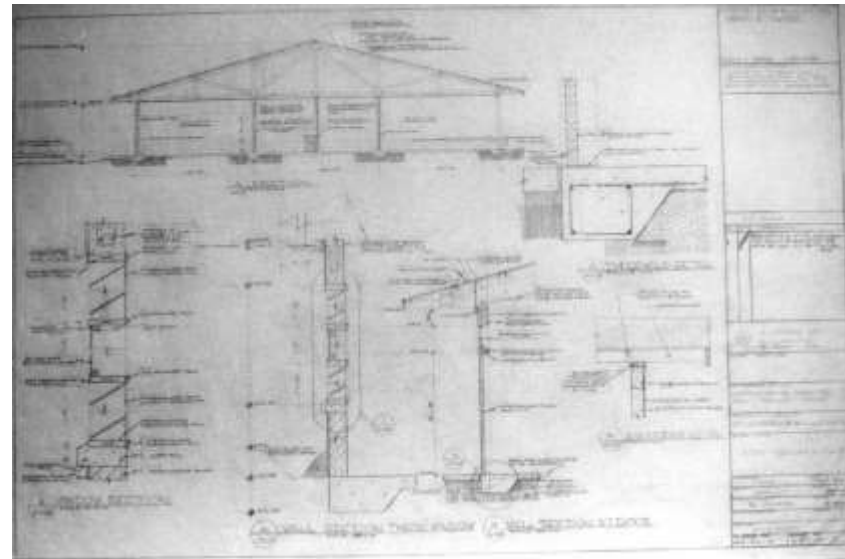


Pediatric Ward Phase 1 roof framing.

PROJECT: Peace Corps Volunteer - Multiple Projects



Antigua Mental Hospital- Female Ward.



Antigua Mental Hospital- Female Ward- section and details.



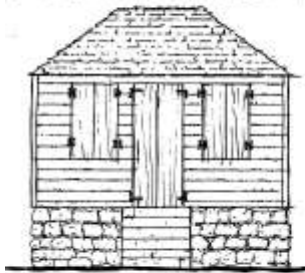
Female Ward under construction.

PROJECT: Peace Corps Volunteer - Multiple Projects

I conducted a study of the historic vernacular architecture of St. John's, Antigua. This culminated in the publication of 'Design Guidelines for a Historic District, St. John's, Antigua'. These guidelines assist building owners, architects, engineers, draftsmen, contractors and government officials in the conservation of St. John's architectural heritage

Floor and window rhythm also give the streetscape much of its character. In St. John's this followed a logical and simple Georgian symmetry. Windows and door were spaced such that the wood shutters did not encroach on each other when two adjacent were swung to 180° open position.

The West Indian cottage with its long axis facing the street typically has a central double door with a window to either side



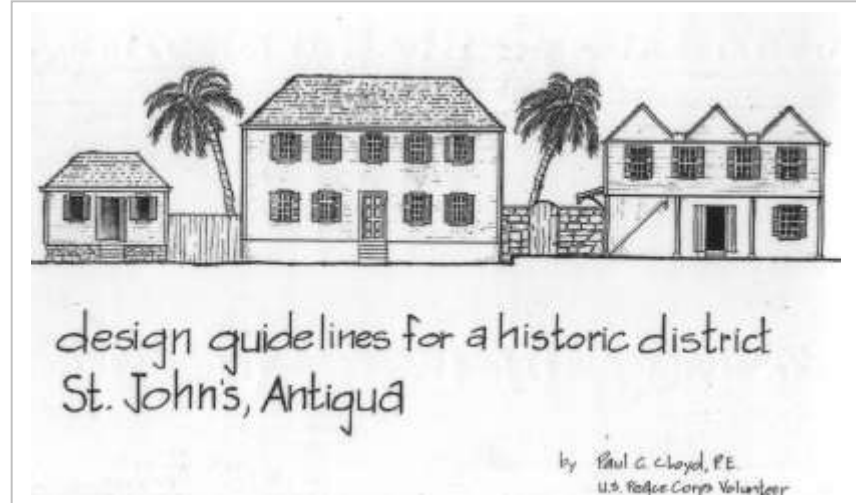
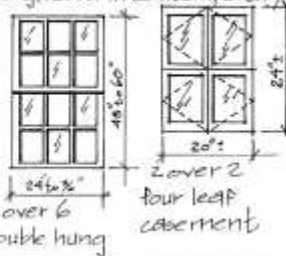
Typical cottage

Larger residences and institutional buildings simply expanded on this basic pattern.

Many openings on less pretentious structures had no glass windows. However where windows are found the pattern of the lights themselves are vital rhythmic characteristic, often neglected in contemporary structure with large unbroken expanses of glass.

Pictured to the right are two common types of traditional windows.

Openings comprise typically 30% of a facade. On the upper floor of two story building this figure could be reduced to 40%.



design guidelines for a historic district St. John's, Antigua

by Paul G. Lloyd, P.E.
U.S. Peace Corps Volunteer

Renaissance: A broad general term applied to much of 17th century architecture such as the revival of classical, gothic and renaissance styles.



Victorian: The revival and eclectic style of architecture popular in the 19th century and named after the reign of Queen Victoria (1837-1901). A feature of this style is an abundance of architectural ornament.



Vernacular: A mode of building based on regional forms and materials. The design of the historic buildings of St. John's is derived from the 15th and 17th century styles described above but modified to meet local needs with available skills and materials.



PROJECT: Peace Corps Volunteer - Multiple Projects



Coffee Street c. 1900.

HISTORIC BUILDING INVENTORY ROSEAU, DOMINICA

PAUL C. CLOYD JR.
U.S. PEACE CORPS VOLUNTEER

I conducted a survey of historic buildings in the town of Roseau, the capital of the neighboring island nation of Dominica. at the request of the Dominica Conservation Association. Approximately 200 historic buildings of "old" Roseau were inventoried. This included, photographing, mapping and providing preliminary recommendations for their preservation.

Roseau study cover.

Building letter & number or use	date	features	materials	comments and/or recommendations	photograph
G Vette's Fashion Boutique	19 th	trad balcony, dormers attached roof possibly 18 th walls at 1st flr.	1st flr. - tynelene plaster over masonry 2nd flr. - beaded wood siding	fair condition, repair siding repaint w/ trad scheme use trad signage remove tynelene finish. replaster smooth or expose masonry	 southwest
H residence workshop	19 th	possibly 18 th walls at 1st flr balcony, final	1st flr. - plaster over masonry	good condition repaint w/ trad paint scheme restore trad door & windows at 1st flr.	 west
I warehouse over grocery	18 th	19 th detailing above 1st flr wrought iron railing at balcony supports keystone lintels	1st flr. - random rubble 2nd flr. - shingle siding 3rd flr. - bevel siding	very good condition excellent ornamentation 1st flr rubble inappropriate 2nd flr. facade removable remove ceramic tile at wall base	 west detail
J commercial store	19 th	framework at fascia 1st flr. walls possibly 18 th shingle roof	1st flr. - plaster over masonry some terrazzo 2nd flr. - clap siding	good condition, remove terrazzo repaint w/ trad scheme shingle shingle roof use trad sign, restore trad 1st facade	 west

Inventory data format.